

NOTES:

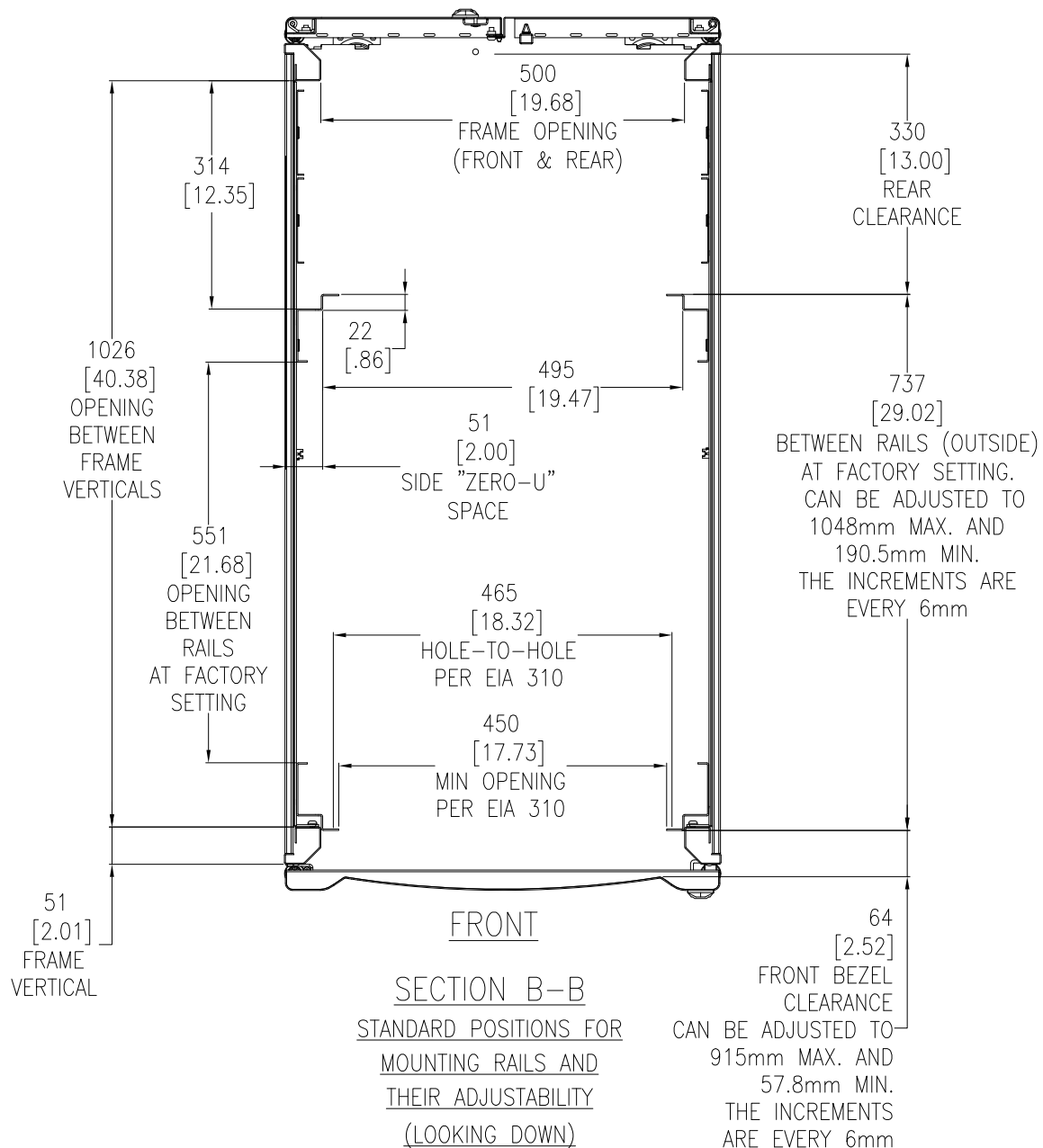
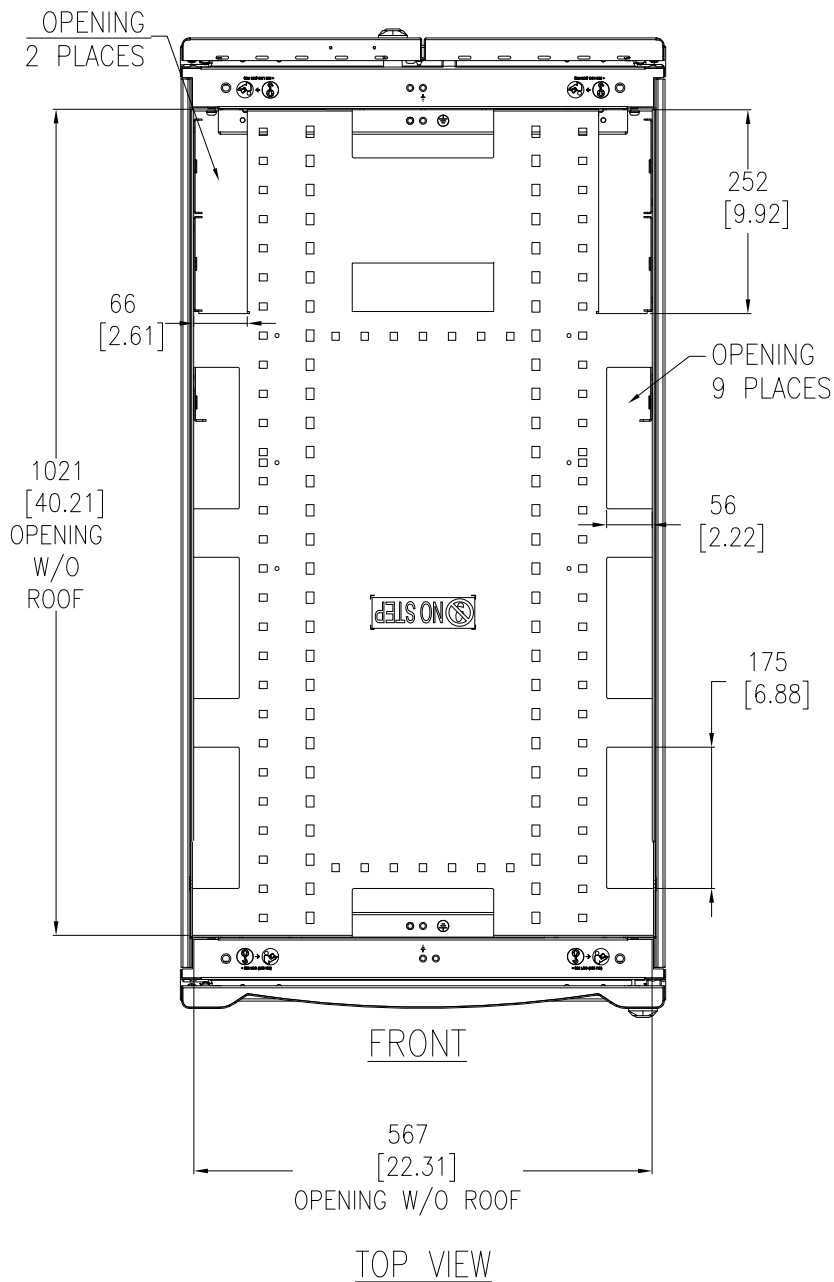
1. INSTALLATION SHALL COMPLY WITH NATIONAL AND LOCAL ELECTRICAL REGULATIONS.
2. PLEASE REFER TO THE PRODUCT MANUALS FOR DETAILED INFORMATION.
3. ALL DIMENSIONS ARE IN MILLIMETERS [INCHES].
4. NET WEIGHT OF UNIT IS 134 Kg [295.00 LBS].
5. CABLE ENTRY IS TOP OR BOTTOM OF UNIT.
6. FRONT AND REAR SERVICE ACCESS REQUIRED.
7. AIR FLOW AND SERVICE REQUIREMENTS, AS WELL AS MINIMUM CLEARANCE TO FIRE SUPPRESSION SYSTEMS SHOULD BE CONSIDERED WHEN LOCATING THE ENCLOSURE.

THIS DRAWING AND SPECIFICATIONS HEREIN ARE THE PROPERTY OF SCHNEIDER ELECTRIC AND SHALL NOT BE COPIED, REPRODUCED OR USED IN WHOLE OR IN PART, AS THE BASIS FOR THE MANUFACTURE OR SALE OF ITEMS WITHOUT WRITTEN PERMISSION FROM SCHNEIDER ELECTRIC. THIS DRAWING IS BASED UPON LATEST AVAILABLE INFORMATION AND IS SUBJECT TO CHANGE WITHOUT NOTICE.



TITLE: NetShelter_SX 42U ENCLOSURE WITH SIDES 600mm WIDE x 1200mm DEEP MAIN MECHANICAL
PROJECT: SUBMITTAL DRAWINGS SHEET 1 OF 4

DWG NO:	AR3300	REV:	3
DRAWN BY:	V BUSH	24-JAN-11	FIRST
ENGINEER:	K THOMAS	24-JAN-11	ANGLE
APPROVED BY:	B SHERWIN / DSA/C LARSEN'S MGR	24-JAN-11	PROJ



NOTES:

1. INSTALLATION SHALL COMPLY WITH NATIONAL AND LOCAL ELECTRICAL REGULATIONS.
2. PLEASE REFER TO THE PRODUCT MANUALS FOR DETAILED INFORMATION.
3. ALL DIMENSIONS ARE IN MILLIMETERS [INCHES].

THIS DRAWING AND SPECIFICATIONS HEREIN ARE THE PROPERTY OF SCHNEIDER ELECTRIC AND SHALL NOT BE COPIED, REPRODUCED OR USED IN WHOLE OR IN PART, AS THE BASIS FOR THE MANUFACTURE OR SALE OF ITEMS WITHOUT WRITTEN PERMISSION FROM SCHNEIDER ELECTRIC. THIS DRAWING IS BASED UPON LATEST AVAILABLE INFORMATION AND IS SUBJECT TO CHANGE WITHOUT NOTICE.



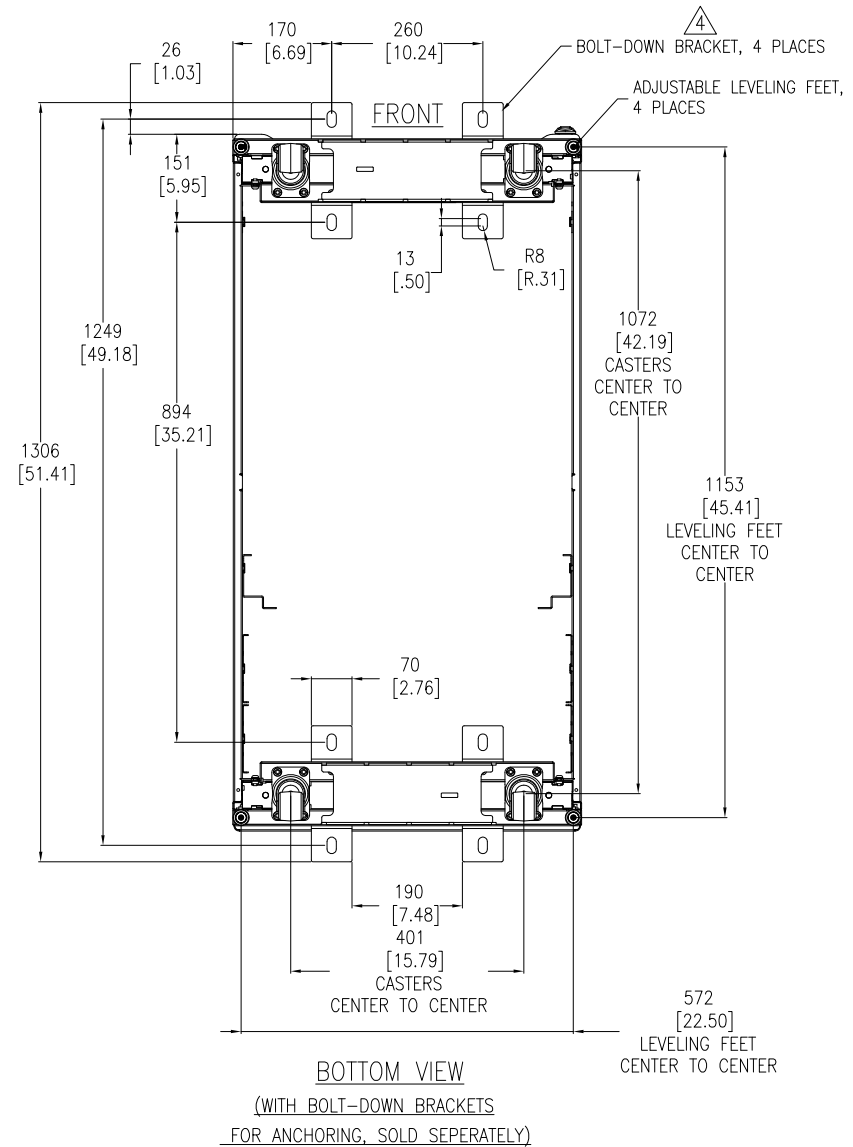
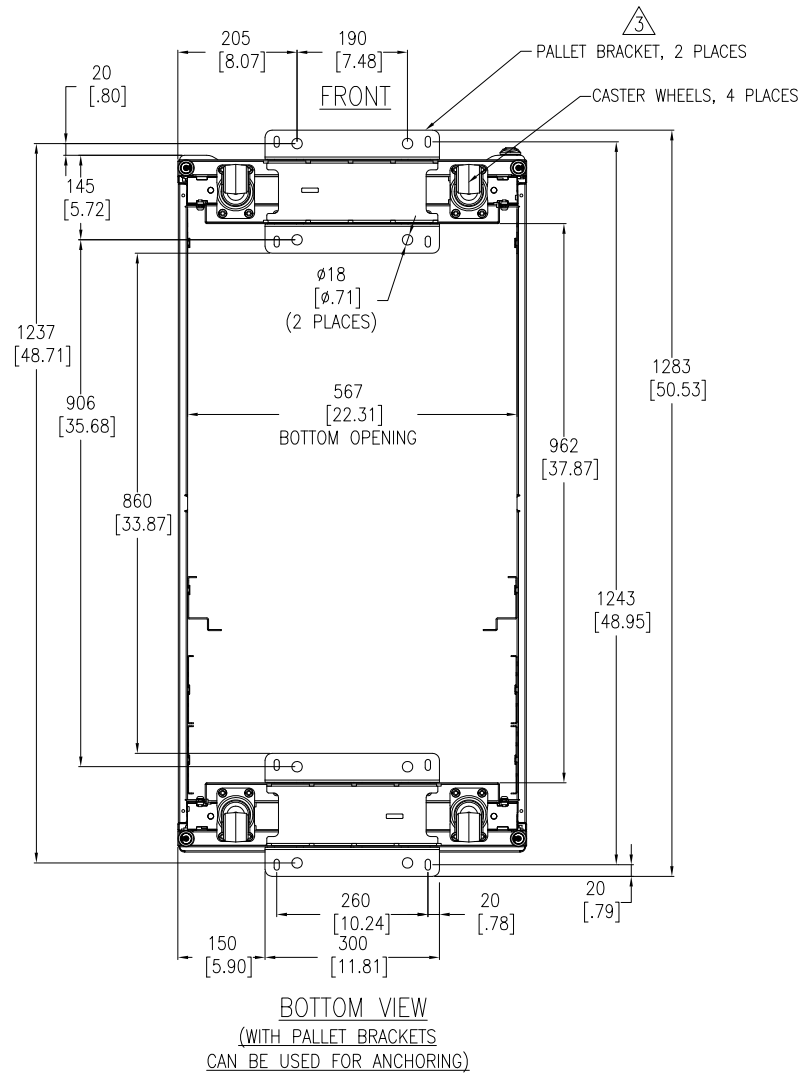
TITLE: NetShelter_SX 42U
 ENCLOSURE WITH SIDES
 600mm WIDE x 1200mm DEEP
 TOP AND SECTION VIEWS

DWG NO: AR3300

REV. 4

DRAWN BY:	V BUSH	24-JAN-11	FIRST
ENGINEER:	K THOMAS	24-JAN-11	ANGLE
APPROVED BY:	SHERWIN/ DORIS/ C. LARSEN/ S. WEA	24-JAN-11	PROJ

PROJECT: SUBMITTAL DRAWINGS SHEET 2 OF 4



NOTES:

1. INSTALLATION MUST COMPLY WITH ALL APPLICABLE NATIONAL AND LOCAL CODES.
2. ALL DIMENSIONS ARE MILLIMETERS [INCHES].
- △3. ANCHORING CAN BE INSTALLED EITHER INSIDE OR OUTSIDE THE NetShelter WITH ONE AT FRONT AND ONE IN BACK.
- △4. BOLT-DOWN KIT (SKU# AR7701) IS OPTIONAL AND HAS TO BE ORDERED SEPARATELY.

THIS DRAWING AND SPECIFICATIONS HEREIN ARE THE PROPERTY OF SCHNEIDER ELECTRIC AND SHALL NOT BE COPIED, REPRODUCED OR USED IN WHOLE OR IN PART, AS THE BASIS FOR THE MANUFACTURE OR SALE OF ITEMS WITHOUT WRITTEN PERMISSION FROM SCHNEIDER ELECTRIC. THIS DRAWING IS BASED UPON LATEST AVAILABLE INFORMATION AND IS SUBJECT TO CHANGE WITHOUT NOTICE.

Schneider Electric

TITLE: NetShelter SX 42U
ENCLOSURE WITH SIDES
600mm WIDE x 1200mm DEEP
BOTTOM VIEWS

PROJECT: SUBMITTAL DRAWINGS SHEET 3 OF 4

DWG NO: AR3300

DRAWN BY: B ZAHN 15-JUL-09

ENGINEER: K THOMAS 15-JUL-09

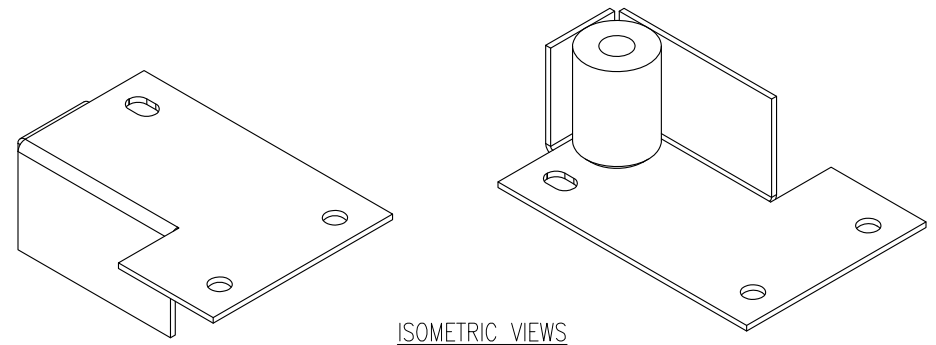
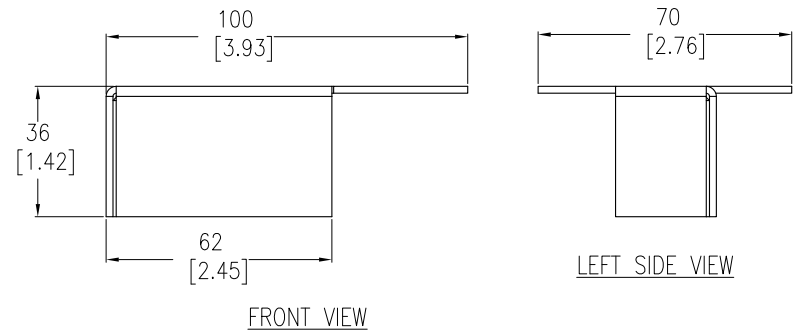
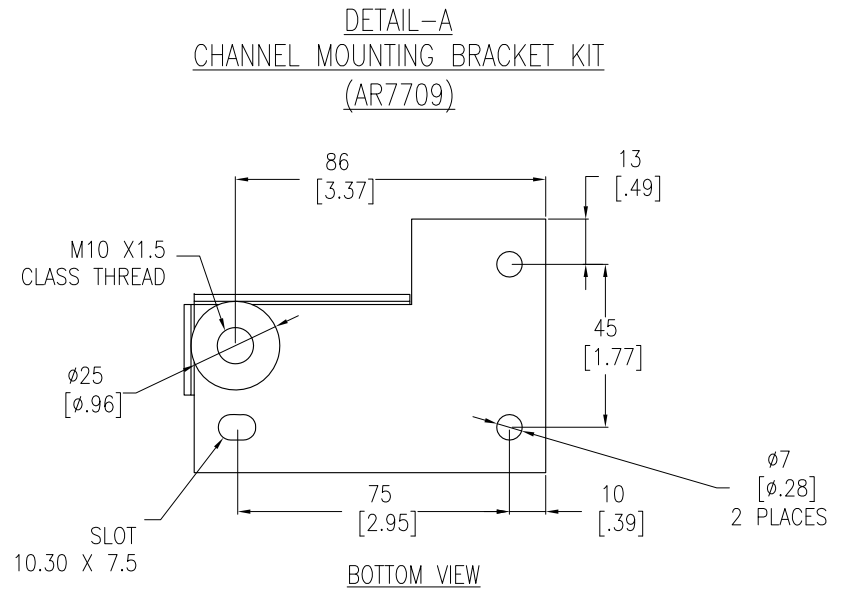
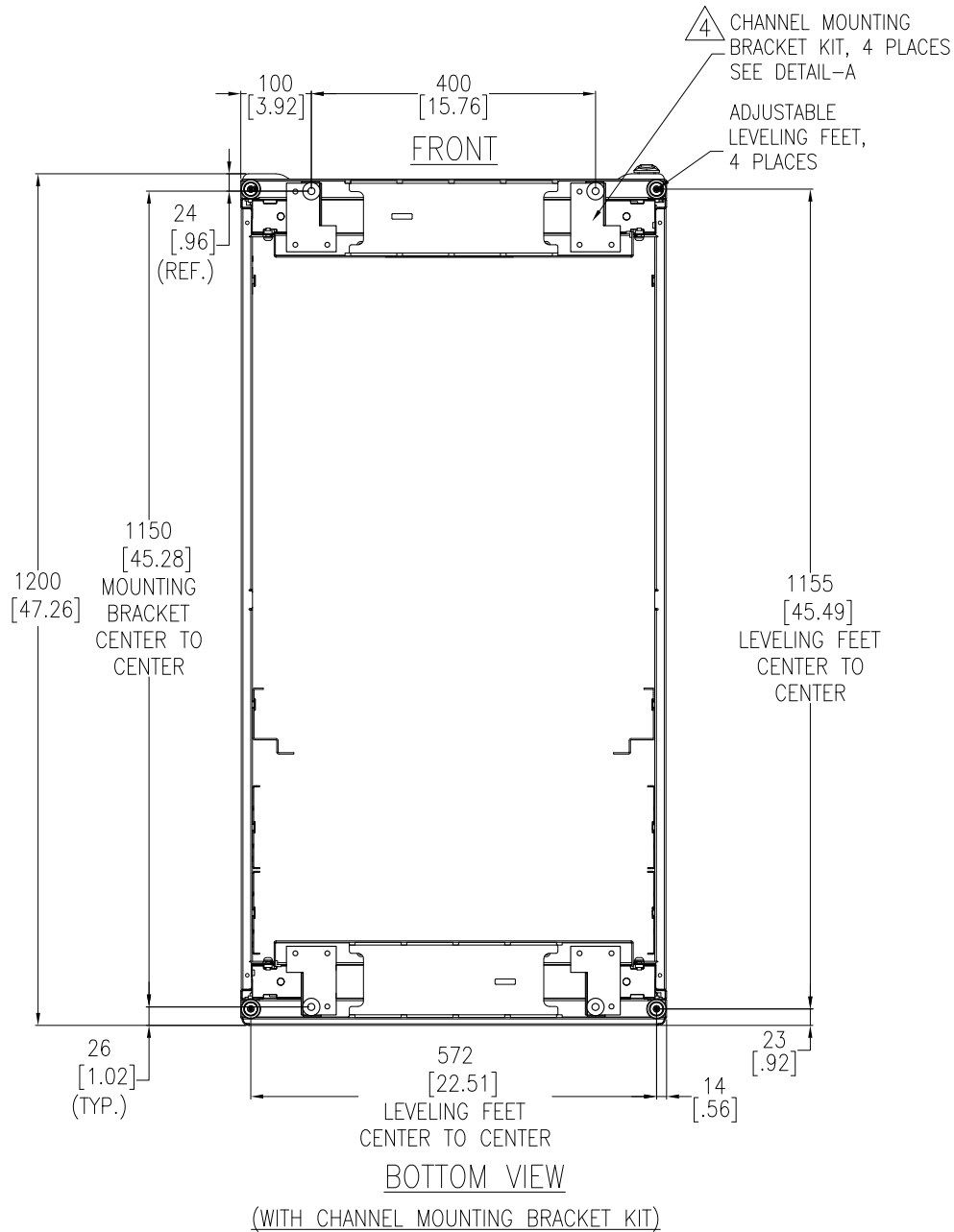
APPROVED BY: SHERWIN/F. DICK/C. WARDEN'S MARK 15-JUL-09

REV. 3

FIRST

ANGLE

PROJ



NOTES:

1. INSTALLATION MUST COMPLY WITH ALL APPLICABLE NATIONAL AND LOCAL CODES.
2. ALL DIMENSIONS ARE MILLIMETERS [INCHES].
3. PLEASE REFER TO INSTALLATION MANUAL: 990-2912 FOR CHANNEL BRACKET INSTALLATION DETAILS.
- Δ4. CHANNEL MOUNTING BRACKET KIT (SKU# AR7709) IS OPTIONAL AND HAS TO BE ORDERED SEPARATELY.

THIS DRAWING AND SPECIFICATIONS HEREIN ARE THE PROPERTY OF SCHNEIDER ELECTRIC AND SHALL NOT BE COPIED, REPRODUCED OR USED IN WHOLE OR IN PART, AS THE BASIS FOR THE MANUFACTURE OR SALE OF ITEMS WITHOUT WRITTEN PERMISSION FROM SCHNEIDER ELECTRIC. THIS DRAWING IS BASED UPON LATEST AVAILABLE INFORMATION AND IS SUBJECT TO CHANGE WITHOUT NOTICE.



TITLE: NetShelter SX 42U ENCLOSURE WITH SIDES 600mm WIDE x 1200mm DEEP BOTTOM VIEW WITH CHANNEL MOUNTING BRACKET KIT

DWG NO:	AR3300	REV:	0
DRAWN BY:	S CUNHA	21-MAY-14	FIRST
ENGINEER:	J KUMMER	21-MAY-14	ANGLE
APPROVED BY:	J SUN	21-MAY-14	PROJ

PROJECT: SUBMITTAL DRAWINGS SHEET 4 OF 4