

APC Back-UPS® Pro



Premium Battery Backup with Surge Protection for High Performance Electronics and Computers

900VA, 1200VA, 1500VA

- *Reliable*
- *Energy Efficient*
- *User Friendly*

The Back-UPS Pro series offers your home and business guaranteed power protection for high performance computer systems, routers/modems, external storage devices, game consoles and other electronics.

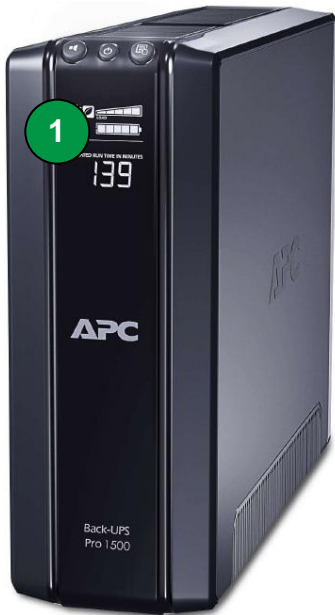
Abundant backup power, auto-shutdown software and protection from damaging surges and spikes are coupled with the Back-UPS Pro's energy saving features, voltage regulation, LCD display and other premium features to make these the perfect units to protect your data and keep you available.



APC Back-UPS Pro Features



Standard on all Back-UPS Pro models



- 1 LCD (Liquid Crystal Display)** gives utility and battery backup the status.
- 2 Automatic Voltage Regulation (AVR)** instantly corrects voltage fluctuations so you can work indefinitely through brownouts and overvoltages.
- 3 “Battery Backup & Surge Protected” Outlets** keep a CPU, monitor and other critical devices running when the power goes out or fluctuates outside safe levels.
- 4 “Surge Only” Outlets** protect printers, faxes or other equipment without reducing battery capacity. (Includes power-saving “Controlled” outlets).
- 5 Data Line Surge Protection** guards against surges and spikes traveling over telephone and network data lines.
- 6 Auto Shutdown Software** allows management of the Back-UPS from your computer
- 7 Push Button Circuit Breaker** enables quick recovery from overloads.
- 8 3 Yr Warranty** for EU countries - 2 years elsewhere, Equipment Protection Policy where applicable (200,000 AUD, 150,000 Euros, 75,000 GBP), free technical phone and online support.
- 9 Automatic Diagnostic Testing** ensures your unit is ready when you need it.
- 10 External Battery Pack Compatibility** dramatically increases run time. (BR1500G-GR only)

APC Back-UPS Pro LCD Display

Easy to read status of utility and battery backup conditions

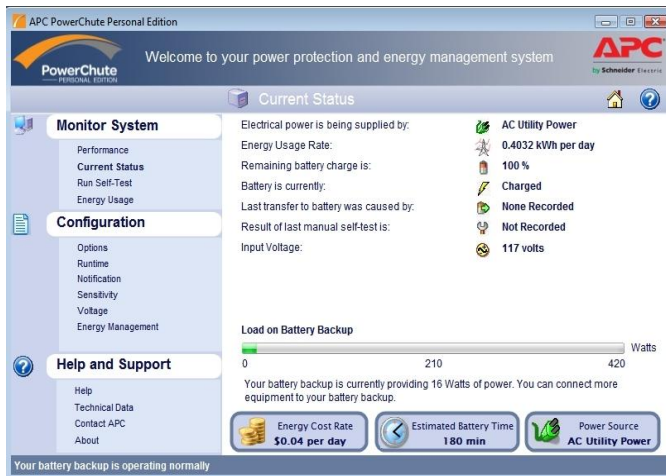


Parameters Displayed:

- Input Power (On Battery/On Utility)
- Input Voltage
- Output Voltage
- Output Frequency
- Load (Watts, % of Capacity, Graphic Display)
- Overload
- AVR Working
- System Fault
- Replace Battery
- Battery Charge Status (Graphic Display)
- Estimated Run Time
- Power Saving Mode (Enabled/Disabled)
- Mute (Enabled/Disabled)
- Number of Power Events

APC PowerChute® Personal Edition

Easy-to-use safe system shutdown software with power and energy management features



- Easy to read view of current power conditions.
- Displays daily energy consumption and cost of powering your equipment.
- Saves money by allowing you to choose an energy management plan that fits your needs.
- Prevents data corruption by saving files and shutting down your system during extended power outages or low battery condition.
- Monitors system, and logs utility power problems and battery conditions
- Allows you to configure Back-UPS options like voltage transfer settings, silencing alarms during night hours, shutdown parameters, energy management features, etc.)
- Easy Installation takes the guesswork out of configuration for first-time users with a jargon-free help feature. (USB and serial interface).

Back-UPS Pro Specifications

| Model Number | BR900G-GR | BR1200G-GR | BR1500G-GR |
|-------------------------------------|---|--|--|
| Output | | | |
| Output Capacity | 900 VA / 540 Watts | 1200 VA / 720 Watts | 1500 VA / 865 Watts |
| Output (on utility) | 230V, 50 or 60 Hz, +/- 3Hz (auto sensing) | | |
| Output (on battery) | 230V +/-8%, 50 or 60 Hz +/-1 Hz (auto sensing) | | |
| Output Connections | 5 total German outlets: 3 battery & surge (including 1 power-saving outlet) 2 surge protection only (including 1 power-saving outlet) | 6 total German outlets: 3 battery & surge (incl. 1 power-saving outlet) 3 surge protection only (incl. 2 power-saving outlets) | 6 total German outlets: 3 battery & surge (incl. 1 power-saving outlet) 3 surge protection only (incl. 2 power-saving outlets) |
| Waveform Type | Stepped Approximation to Sine Wave | | |
| Input | | | |
| Input Voltage, Freq. | 230V, 50 or 60 Hz, +/- 3Hz (auto sensing) | | |
| Input Connection | 1,8 m power cord with German plug | | |
| Surge Protection | | | |
| AC Power | All outlets | | |
| Data Line | Analog phone line for phone/fax/modem/DSL Network: up to 1000 Base-T (gigabit) Ethernet | | |
| Battery | | | |
| Battery Type | Sealed, lead-acid, maintenance-free | | |
| External battery pack Compatibility | No | No | Yes (use BR24BPG) |
| Management | | | |
| Alarms | Visual (LCD) and audible alarms | | |
| Shutdown Software | PowerChute Personal Edition (with USB and serial interface) | | |
| Safety | | | |
| Certification/ Approvals | TUV-GS, CE | TUV-GS, CE | TUV-GS, CE |

APC by Schneider Electric

132 Fairgrounds Rd
West Kingston, RI 02892

www.apc.com



by Schneider Electric