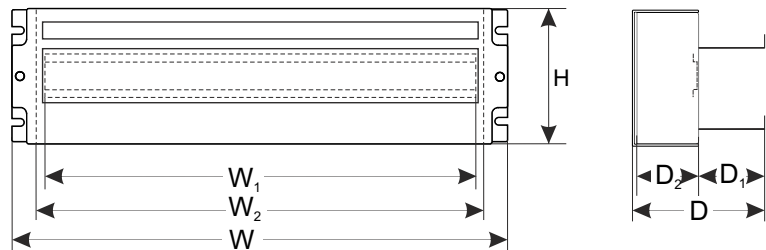
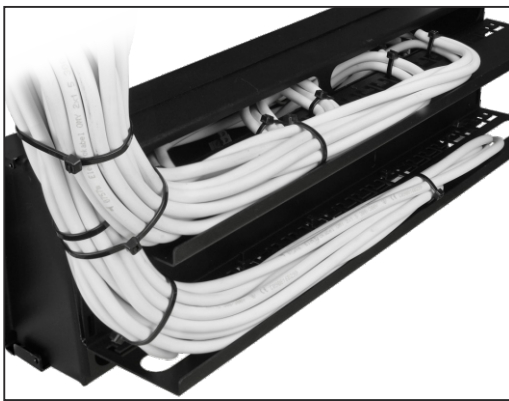
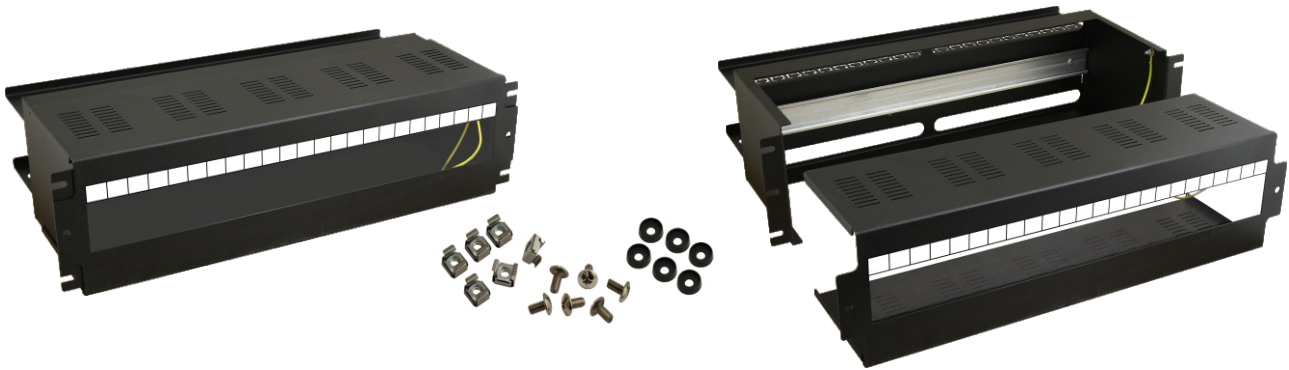


CODE: **ARADIN2** v.1.2/III

EN

NAME: **Enclosure with a DIN rail for RACK cabinets, 24xS, 160mm deep**

INTENDED USE

The enclosure with a DIN rail for RACK cabinets is intended for mounting equipment located inside DIN enclosures, for RACK 19" cabinets. The enclosure features a DIN rail, length: 24x1S. The height of the mounted module cannot exceed 160mm.

SPECIFICATIONS

Mounting dimensions:	RACK cabinet: W=19", H=3U number of fuses: 24x1S
External:	W=482, H=131, D=235 [mm, +/-2] W ₁ =435, W ₂ =444, D ₁ =70, D ₂ =162 [mm, +/-2]
Net/gross weight:	3,75 / 3,96 [kg]
Materials:	bottom: sheet metal DC01, 1,0mm thick, RAL9005 + TH35 rail cantilever: sheet metal DC01, 0,7mm thick, RAL9005 + Plexiglas window
Use:	inside
Notes:	- the enclosure can accommodate max. 24 fuses, 1 S wide - six-point fixing to the front RACK rails - 6 M6 screws + cage nuts included - the enclosure features a 420x20 mm labeling field
Certificates, declarations:	RoHS