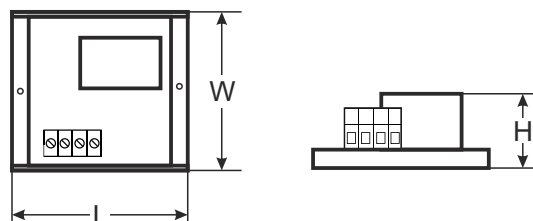
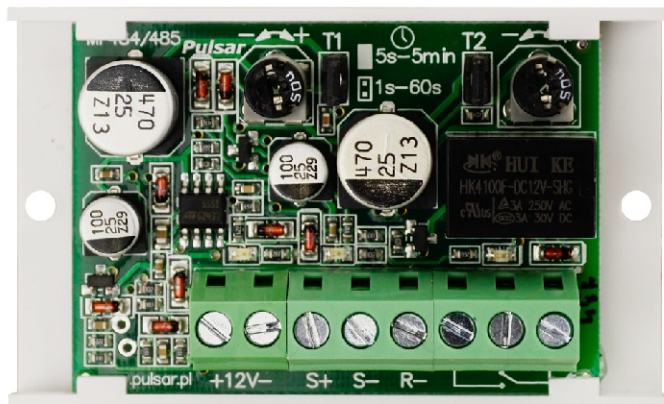


CODE: **AWZ526** v.1.0/III  
NAME: **PC4 Time Relay Module**

EN\*\*



## DESCRIPTION

The PC4 time module is a transceiver that allows Activation of the relay for the T2 time after the T1 trigger time. The T1 and T2 times can be adjusted in the range from 1 second to 5 minutes.

The relay can be used in door opening circuits, locks, gate closing systems, alarm systems, Intrusion Detection Systems, Access control systems and many others.

## TECHNICAL DATA

<b>Supply voltage</b>	10 ÷ 14 V DC
<b>Power consumption</b>	15 mA - inactive relay / 35 mA - active relay, (±5%)
<b>S+ input</b>	10 ÷ 14 V control
<b>S- input</b>	0 V (GND) control
<b>R- input</b>	0 V (GND) control
<b>Time range</b>	Time T1: range 1 s ÷ 60 s and 5 s ÷ 5 min Time T2: range 1 s ÷ 60 s and 5 s ÷ 5 min
<b>The number of relays</b>	1
<b>Maximum connection voltage</b>	30 V DC / 48 V AC
<b>Maximum connection current</b>	1 A
<b>Maximum contact resistance</b>	<100 mOhm
<b>Optical indication of operation</b>	LED light
<b>Operation parameters</b>	-10°C ÷ +40°C, relative humidity 20%...90%, without condensation
<b>Dimensions</b>	L=70, W=43, H=23 [mm, +/-2]
<b>Mounting</b>	mounting tape or dowel pins x 2 (holes Ø3mm)
<b>Connectors</b>	Φ0,51 ÷ 2,05 (AWG 24-12)
<b>Net/gross weight</b>	0,04 / 0,06 [kg]
<b>Declarations, warranty</b>	CE, 2 years from production date