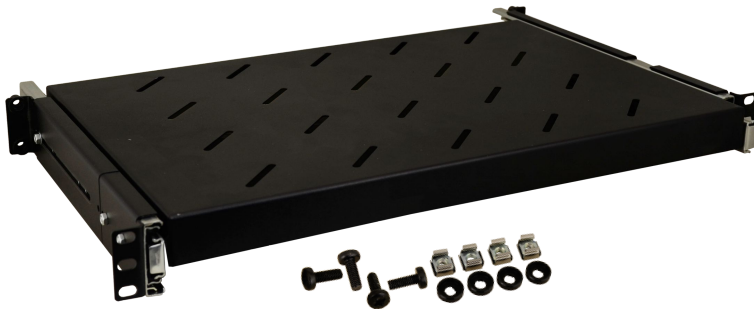
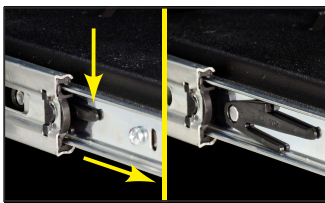
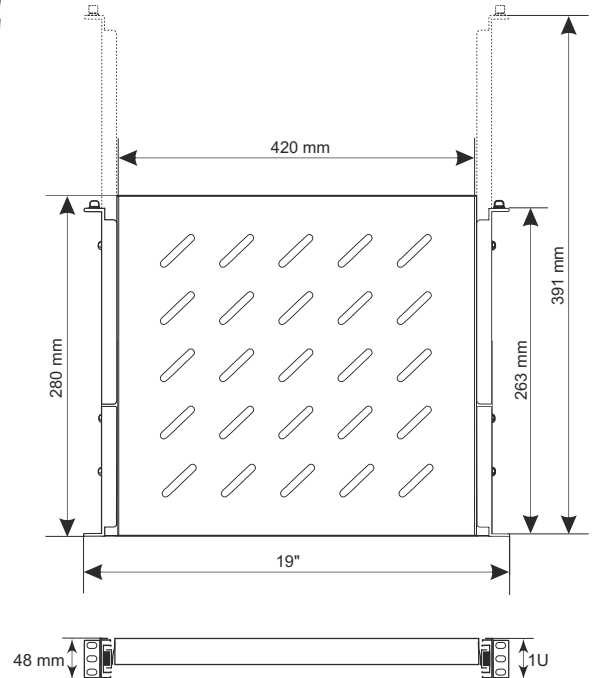


CODE: **RAPW450 v1.0/II**
 NAME: **Sliding shelf 420 x 280 for RACK 19" cabinets**

EN



Full-extension slide of the shelf



Pull out



shelf with guides



empty RACK 19" cabinet



guides mounting



shelf mounting



mounted shelf



Full-extension slide of the shelf



shelf loading capacity

INTENDED USE

Sliding shelf for RACK 19" cabinets of the RWA/RW/RWD type with external depth of 450 mm (600 mm - RWD). Sliding shelf for RACK 19" cabinet allows to mount devices that are outside the RACK 19" enclosure. Full-extension slide of the shelf grants access to devices outside the RACK cabinet.

SPECIFICATIONS

| | |
|-----------------------------|--|
| Assembly dimensions: | H=19", H=1U, D=263÷391mm |
| Shelf dimensions: | W=420, D=280 [+/-2 mm] |
| Net/gross weight: | 2,7 / 2,8 [kg] |
| Materials: | 1,2 mm steel sheet color: RAL9005 |
| Static load: | 15 kg |
| Use: | inside |
| Notes: | <ul style="list-style-type: none"> - mounting set includes: 4 M6 screws + cage nuts + plastic washers - four-point fixing to the RACK rails - full-extension slide of the shelf |